

# **Precision Machining & Complex Assemblies for Highly Regulated Sectors**

**Precision Machining & Complex Assemblies**  
Aerospace | Defence | Oil & Gas | Highly  
Regulated Industries

- **Summit Engineering (Birmingham) Ltd** is a UK-based precision engineering company specialising in **complex machined components and assemblies** for customers operating in highly regulated and safety-critical environments.
- We support customers from **prototype through to serial production**, providing a fully managed service underpinned by robust quality systems and continuous improvement.



## **Core Capabilities**

### **Machining**

CNC milling (multi-axis)

CNC turning

Small to medium batch production

Tight tolerance, high-complexity components

### **Assemblies**

Mechanical sub-assemblies

Build to drawing / build to specification

Torque-controlled assembly

Pressure and functional testing where required

### **Materials Experience**

Aerospace & defence steels

Aluminium alloys

Stainless steels

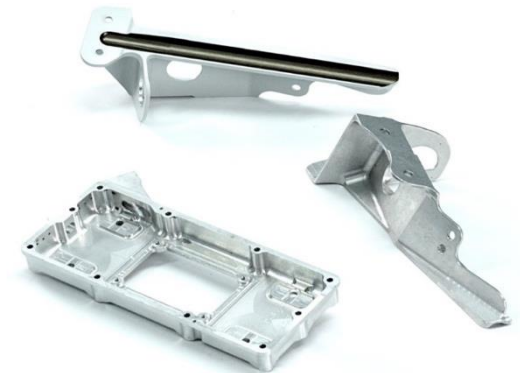
Exotic alloys (application dependent)

Engineering plastics & phenolic resins

Quality and compliance are central to everything we do.



- **Defence & Aerospace Experience**
- Summit Engineering supplies precision-machined components and assemblies into **defence and aerospace supply chains**, including **indirect supply to missile and propulsion programmes**.
- We are experienced in:
- High documentation burden environments
- Configuration control
- Programme-driven delivery schedules
- Managing approved sub-tier suppliers for special processes (e.g. coatings, treatments)



## Programme & Supply Chain Support

We don't just machine parts — we **manage risk**.

Single point of contact

Project-managed work packages

Approved supplier management

Capacity planning & delivery tracking

Continuous improvement and VFM focus

## Capacity & Scale

Single-shift operation (with flexibility to scale)

Skilled workforce experienced in regulated sectors

Agile setup suitable for:

Prototypes

Low–medium volume production

Repeat legacy work



## Investment & Future Roadmap

We are actively investing to support future programme requirements, including:

Additional machining capacity

Process automation

Expanded assembly capability

Evaluation of advanced technologies such as EDM and additive-enabled workflows

Continuous quality and environmental improvement

We welcome early engagement to align future investment with customer needs.



- **Accreditations**
- ISO 9001
- AS9100D
- AS13100 (including Rolls-Royce SABRe alignment)
- ISO 14001 (in progress – targeted Summer 2026)
- **Quality Practices**
- Full material traceability
- First Article Inspection (FAIR / AS9102 aligned)
- Controlled special process management
- Robust NCR & corrective action processes
- Customer-specific quality flow-down management

